



“Vehicle shown is for illustration purposes only & does not reflect vehicle shown on the Stellantis stand”.

# Ducato Dropside Diesel 140hp



**Model:** Ducato Dropside L3H1 (140 PS)

**Engine available:** 140hp/103kW

**Fuel economy:** 24.4 – 44.1mpg (WLTP)

**Transmission:** Manual 6-speed

**Max payload:** 1475kg

**Load length:** 3.83m

*Vehicle features the following extra cost options: Double leaf rear suspension; Spare wheel & winch; 7in Colour touchscreen with digital radio, Bluetooth, handsfree, USB & bi-tune.*

# E-DUCATO & DUCATO



## MY26 Prices and Specifications

Available to order from Mid March 2026  
Pricing includes VED change from 1st April 2026



VISIT US



TEST DRIVE



GET A QUOTE



CONFIGURE

[MODEL TRIMS >](#)

[PRICES >](#)

[EQUIPMENT >](#)

[OPTIONS >](#)

[COLOURS >](#)

[WHEELS & INTERIORS >](#)

[ENGINE SPECIFICATION >](#)

[ELECTRIC RANGE >](#)

[CO2 & FUEL ECONOMY >](#)

[WEIGHTS & LOADS >](#)

[DIMENSIONS >](#)

[CONNECTED SERVICES >](#)

[GLOSSARY OF TERMS >](#)

# E-DUCATO & DUCATO

MY26 Prices and Specifications



VISIT US



TEST DRIVE




GET A QUOTE



CONFIGURE

# Model Trims

## ● Ducato

 Click the trim names to compare features.

### Ducato Panel Van models include:

#### COMFORT/CONVENIENCE

- Air conditioning (manual on Diesel, automatic on Electric)
- Rear parking sensors
- Cruise control with variable speed limiter (Diesel excl. 4.25T)
- Two cup holders and mobile phone storage in centre of lower dashboard
- Electric Parking Brake (Electric)
- Electric power steering
- Adjustable driver's seat with lumbar support and armrest
- Dual passenger bench seat

#### TECHNOLOGY/ INFOTAINMENT

- 5" DAB Radio Bluetooth® USB (Diesel)
- 7" Colour touchscreen display DAB/FM/AM/Apple CarPlay/Android Auto™ (Electric)
- Full 7" Digital instrument cluster (Electric)
- Global telematics box

#### EXTERIOR

- Side protection strips
- Steel wheels with centre cap
- Twin solid rear doors, opening 180°
- Nearside sliding side loading door. Unglazed
- Aerodynamic kit: central spoiler, air guides, active grille shutter
- Twin lens door mirrors with electrically adjustable and heated upper mirror

#### SAFETY/SECURITY

- Driver's airbag
- Double passenger airbag
- Fixed full height steel bulkhead
- Electronic stability control (ESC)
- Advanced Emergency Braking System (AEBS) – pedestrian and cyclist
- Lane Support System
- Traffic Sign Recognition
- Driver Attention Alert level 4 (includes driver weariness camera)
- Intelligent Speed Assist
- Tyre Pressure Monitoring System (TPMS)
- Fix and go kit
- Dead locks
- Perimeter alarm
- Cargo lashing hooks in rear

#### GLAZED VANS ONLY

- Twin glazed rear doors, opening 180°
- Glazing to row 2, 3 and nearside sliding side loading door

#### N2 MODELS ONLY

- Reinforced suspension
- 56mph Speed limiter
- Tachograph
- Moving Off Information System (MOIS)

#### PRIMO TRIM

(features over and above)

- 10" Colour Touchscreen display DAB/FM/AM/Apple Carplay/Android Auto™ with Connected Navigation
- Double USB
- Rearview Camera
- 360 Parking Sensors
- Automatic Climate Control
- High Beam Assist
- Rain and Dusk Sensor (Auto-Lights & Auto-Wipers)
- Front Fog Lights
- Full 7" Digital instrument cluster
- Wireless Charger
- Keyless Entry and Go
- Eat and Work Benchseat
- Driver's Seat with Mid-Level Fabric and underseat storage

FIAT SCUDO & DUCATO



VISIT US



TEST DRIVE



GET A QUOTE



CONFIGURE

# Prices

**IMPORTANT NOTE RE: CONVERSIONS**

Any vehicle ordered (including panel vans) for a conversion that changes the base vehicle type approval must be aligned to a Stellantis Certified Converter within CustomFit Conversion tool by entering the associated vehicle order number. Please note that if the vehicle order number is not inputted into CustomFit Conversion tool then the order/s will be cancelled. It is also important that you discuss your conversion project with the converter before ordering the base vehicle.

<https://converttool-xf.stellantis.com/#/login/fiat>

● Electric    ○ Diesel

	Gross Vehicle Weight (kg)	Maximum Indicative Payload (kg)	Load Space (m <sup>3</sup> )	WLTP CO2 (g/km)	WLTP Range (mi)	MVS Code	Basic Price (£) exc VAT	Plug-In-Van Grant (£)	On-The-Road (£) exc VAT	OTR RRP after PIVG* exc. VAT
<b>PANEL VANS</b>										
E-Ducato Panel Van L3H2 3.5T Heavy Electric 270hp Automatic MY26	3500	730	13.0	0	235	505.BG1.2	£49,485	£5,000	£50,895	£45,895
E-Ducato Panel Van L3H2 4.25T Electric 270hp Automatic MY26	4250	1480	13.0	0	263	505.GG1.2	£50,295	£5,000	£51,345	£46,345
E-Ducato Panel Van L3H3 4.25T Electric 270hp Automatic MY26	4250	1455	15.0	0	254	505.GA1.2	£51,105	£5,000	£52,155	£47,155
E-Ducato Panel Van L4H2 4.25T Electric 270hp Automatic MY26	4250	1435	15.0	0	262	505.HG1.2	£51,105	£5,000	£52,155	£47,155
E-Ducato Panel Van L4H3 4.25T Electric 270hp Automatic MY26	4250	1480	17.0	0	252	505.HA1.2	£51,915	£5,000	£52,965	£47,965
<b>GLAZED VANS</b>										
E-Ducato Glazed Van L4H2 4.25T Electric 270hp Automatic MY26	4250	1435	15.0	0	262	505.HH1.2	£51,555	£5,000	£52,605	£47,605
<b>CHASSIS CABS</b>										
E-Ducato Chassis Cab L3H1 4.25T Electric 270hp Automatic MY26*	4250	1770	-	0	N/A	505.GC1.2	£47,865	£5,000	£48,915	£43,915

\* Plug-In Van Grant

\*\* Currently there is no PIVG approval for Chassis Cab BEV variants - This version is for large fleet orders only

All Manufacturers Recommended Basic Prices are exclusive of VAT, Delivery to Retailer and Number Plates (£995 exc VAT), Government First Registration Fee (£55) and Vehicle Excise Duty. (1st April 2025 rates used) On-the-Road (OTR) prices are inclusive of Delivery to Retailer and Number Plates, Government First Registration Fee and Vehicle Excise Duty but exclude fuel and insurance. (Prices correct at time of publishing) (N1) and (N2) Government applied Plug-In Van Grant (referred to as 'Government Incentive') of 35% up to a maximum of £5,000 has been applied to E-Ducato purchase price subject to Government Grant approval. Grant Incentive shown is for representative purpose only and is based in this example on the manufacturers total price (subject to change). Please check with your local retailer or fleet sales representative to ensure that the grant calculation is applied to the final purchase price.

VAT is charged on the basic price, prior to the deduction of the 'Government Incentive'.



VISIT US



TEST DRIVE



GET A QUOTE



CONFIGURE



VISIT US



TEST DRIVE



GET A QUOTE



CONFIGURE

# Prices

○ Electric ● Diesel

**IMPORTANT NOTE RE: CONVERSIONS**

Any vehicle ordered (including panel vans) for a conversion that changes the base vehicle type approval must be aligned to a Stellantis Certified Converter within CustomFit Conversion tool by entering the associated vehicle order number. Please note that if the vehicle order number is not inputted into CustomFit Conversion tool then the order/s will be cancelled. It is also important that you discuss your conversion project with the converter before ordering the base vehicle.

<https://converttool-xf.stellantis.com/#/login/fict>

On The Road (OTR) charge includes delivery to dealer and number plates (£895.00 exc. VAT), VAT on delivery charges and number plates (£139.00), 1st-Year Vehicle Tax and vehicle First Registration Fee (£65.00).  
Total Estimated OTR Price Includes Basic Price and OTR charge (incl. VAT).

	Gross Vehicle Weight (kg)	Maximum Indicative Payload (kg)	Load Space (m <sup>3</sup> )	WLTP CO <sub>2</sub> (g/km)	WLTP Economy (mpg)	MVS Code	Basic Price (£) exc VAT	On-The-Road (£) exc VAT
<b>PANEL VANS</b>								
Ducato Panel Van L2H1 3.5T Diesel 140hp Manual MY26	3500	1450	10.0	165 - 243	44.8 - 30.4	290.AL3.2	£32,055	£33,465
Ducato Panel Van L2H2 3.5T Diesel 140hp Manual MY26	3500	1425	11.5	165 - 243	44.8 - 30.4	290.AG3.2	£32,865	£34,275
Ducato Panel Van L2H2 3.5T Diesel 140hp Automatic MY26	3500	1365	11.5	184 - 315	40.4 - 23.5	290.AG4.2	£34,965	£36,375
Ducato Panel Van L3H2 3.5T Diesel 140hp Manual MY26	3500	1375	13.0	165 - 243	44.8 - 30.4	290.BG3.2	£33,675	£35,085
Ducato Panel Van L3H2 3.5T Diesel 140hp Automatic MY26	3500	1315	13.0	184 - 315	40.4 - 23.5	290.BG4.2	£35,775	£37,185
Ducato Panel Van L3H3 3.5T Diesel 140hp Manual MY26	3500	1350	15.0	165 - 243	44.8 - 30.4	290.BA3.2	£34,485	£35,895
Ducato Panel Van L3H2 3.5T Heavy Diesel 140hp Manual MY26	3500	1335	13.0	165 - 247	44.8 - 30.1	295.BG3.2	£34,125	£35,535
Ducato Panel Van L4H2 3.5T Heavy Diesel 140hp Manual MY26	3500	1290	15.0	165 - 247	44.8 - 30.1	295.CG3.2	£34,935	£36,345
Ducato Panel Van L4H3 3.5T Heavy Diesel 140hp Manual MY26	3500	1260	17.0	165 - 247	44.8 - 30.1	295.CA3.2	£35,745	£37,155
Ducato Panel Van L4H2 3.5T Heavy Diesel 180hp Automatic MY26	3500	1285	15.0	178 - 328	41.5 - 22.6	295.CG6.2	£38,435	£39,845
Ducato Panel Van L4H2 4.25T Diesel 180hp Automatic MY26	4250	2030	15.0	201 - 348	37.2 - 21.4	295.HG6.2	£39,245	£40,472
Ducato Panel Van L4H3 4.25T Diesel 180hp Manual MY26	4250	2015	17.0	192 - 321	38.7 - 23.2	295.HA5.2	£37,955	£39,182
Ducato Panel Van L4H3 4.25T Diesel 180hp Automatic MY26	4250	2000	17.0	201 - 348	37.2 - 21.4	295.HA6.2	£40,055	£41,282
Ducato Panel Van L2H2 3.5T Diesel 140PS Manual Primo MY26	3500	1425	11.5	165 - 243	44.8 - 30.4	290.AG3.2PRI	TBC	TBC
Ducato Panel Van L3H2 3.5T Diesel 140hp Manual Primo MY26	3500	1375	13.0	165 - 243	44.8 - 30.4	290.BG3.2PRI	TBC	TBC
Ducato Panel Van L3H2 3.5T Diesel 140hp Automatic Primo MY26	3500	1315	15.0	184 - 315	40.4 - 23.5	290.BG4.2PRI	TBC	TBC
<b>CREW VANS</b>								
Ducato Crew Van L3H2 3.5T Diesel 140hp Manual MY26	3500	1235	15.0	165 - 243	44.8 - 30.4	290.BX3.2	TBC	TBC
<b>GLAZED CAB</b>								
Ducato Glazed Van L3H2 3.5T Diesel 140hp Manual MY26	3500	1380	15.0	169 - 306	44.1 - 24.4	290.BH3.2	£34,125	£35,535
Ducato Glazed Van L4H2 4.25T Diesel 140hp Manual MY26	4250	2050	15.0	192 - 314	38.7 - 23.7	295.HH3.2	£36,195	£37,422
Ducato Glazed Van L4H2 4.25T Diesel 180hp Automatic MY26	4250	2030	15.0	201 - 348	37.2 - 21.4	295.HH6.2	£39,695	£40,922



VISIT US



TEST DRIVE



GET A QUOTE



CONFIGURE

# Prices

○ Electric ● Diesel

**IMPORTANT NOTE RE: CONVERSIONS**

Any vehicle ordered (including panel vans) for a conversion that changes the base vehicle type approval must be aligned to a Stellantis Certified Converter within CustomFit Conversion tool by entering the associated vehicle order number. Please note that if the vehicle order number is not inputted into CustomFit Conversion tool then the order/s will be cancelled. It is also important that you discuss your conversion project with the converter before ordering the base vehicle.

<https://converttool-xf.stellantis.com/#/login/fiat>

On The Road (OTR) charge includes delivery to dealer and number plates (£556.00 excl. VAT), VAT on delivery charges and number plates (£136.00), First-Year Vehicle Tax (£345 NI, £71 N2) and vehicle First Registration Fee (£65.00).  
Total Estimated OTR Price includes Basic Price and OTR charge (incl. VAT).

	Gross Vehicle Weight (kg)	Maximum Indicative Payload (kg)	Load Space (m3)	WLTP CO2 (g/km)	WLTP Economy (mpg)	MYS Code	Basic Price (£) exc VAT	On-The-Road (£) exc VAT
<b>CHASSIS CAB</b>								
Ducato Chassis Cab L2H1 3.5T Diesel 140hp Manual MY26	3500	1735	N/A	169 - 306	44.1 - 24.4	290.AC3.2	£30,705	£32,115
Ducato Chassis Cab L2H1 3.5T Heavy Diesel 140hp Manual MY26	3500	1695	N/A	169 - 306	44.1 - 24.4	295.AC3.2	£31,155	£32,565
Ducato Chassis Cab L3H1 3.5T Diesel 140hp Manual MY26	3500	1715	N/A	169 - 306	44.1 - 24.4	290.BC3.2	£31,245	£32,655
Ducato Chassis Cab L3H1 3.5T Heavy Diesel 140hp Manual MY25	3500	1675	N/A	169 - 306	44.1 - 24.4	295.BC3.2	£31,695	£33,105
Ducato Chassis Cab L3H1 3.5T Diesel 140hp Automatic MY26	3500	1655	N/A	184 - 315	40.4 - 23.5	290.BC4.2	£33,345	£34,755
Ducato Chassis Crew Cab L3H1 3.5T Heavy Diesel 140hp Manual MY26	3500	1460	N/A	169 - 306	44.1 - 24.4	295.BD3.2	£33,045	£34,455
<b>PLATFORM VANS (ORDER WITH OPTION 292)</b>								
Ducato Platform Cab L3H1 3.5T Diesel 140hp Manual MY26	3500	1740	N/A	169 - 306	44.1 - 24.4	290.BC3.2	£31,245	£32,655
Ducato Platform Cab L3H1 3.5T Heavy Diesel 140hp Manual MY26	3500	1700	N/A	169 - 306	44.1 - 24.4	295.BC3.2	£31,695	£33,105
Ducato Platform Cab 3.5T L3H1 Diesel 180hp Automatic MY26	3500	1655	N/A	201 - 348	37.2 - 21.4	295.BC6.2	£35,195	£36,605
<b>BACK TO BACK</b>								
Ducato Back to Back 3.5T Diesel 140hp Manual MY26	3500	N/A	N/A	169 - 306	44.1 - 24.4	290.DC3.2	£30,435	£31,845
Ducato Back to Back 4.25T Diesel 180hp Automatic MY26	4250	N/A	N/A	201 - 348	37.2 - 21.4	295.JC6.2	£35,195	£36,422
<b>DROPSIDE CABS</b>								
Ducato Dropside L3H1 3.5T Diesel 140hp Manual MY26	3500	1475	N/A	169 - 306	44.1 - 24.4	290.B73.2	£33,945	£35,355
Ducato Dropside L4H1 3.5T Heavy Diesel 140hp Manual MY26	3500	1400	N/A	169 - 306	44.1 - 24.4	295.C73.2	£34,665	£36,075
<b>DROPSIDE CREW CABS</b>								
Ducato Dropside Crew Cab L3H1 3.5T Heavy Diesel 140hp Manual MY26	3500	1290	N/A	169 - 306	44.1 - 24.4	295.B93.2	£35,745	£37,155
<b>1-WAY TIPPER CABS (ORDER WITH OPTION AX9)</b>								
Ducato 1-Way Tipper L2H1 3.5T Heavy Diesel 140hp Manual MY26	3500	1145	N/A	169 - 306	44.1 - 24.4	295.A73.2	£37,635	£39,045

# Equipment

● Standard Equipment   ○ Optional   P Optional as part of pack

Panel Van / Glazed Van / Crew Van		Incomplete Chassis / Platform / Crew Cab / B2B	Dropside / Tipper
Ducato	Primo	Ducato	Ducato

## TECHNOLOGY AND ENTERTAINMENT

Multimedia featuring 5" Colour Screen with DAB radio, USB socket and Bluetooth® audio streaming	● DIESEL	● DIESEL	●
Multimedia featuring 7" Colour touchscreen with DAB radio, Bluetooth® handsfree, USB socket, bi-tuner, Apple CarPlay™ and Android Auto™	● ELECTRIC	● ELECTRIC	
Uconnect Infotainment Touchscreen 10" with Integrated Navigation system: Radio AM/FM/DAB, 10" HD Touch screen with Mirror Screen (WiFi), 4G connectivity + voice control + E-call + A-call, Two speakers & two tweeters, 1x USB		●	
<b>Connectivity via BTA with RCE</b> Programmable heating and Delayed Charging via Uconnect Infotainment or MyFiat App (6 months free subscription trial)	●	●	●

## COMFORT AND CONVENIENCE

Front electric windows	●	●	●	●
Manual air-conditioning	● DIESEL		● DIESEL	● DIESEL
Automatic air-conditioning	● ELECTRIC	●	● ELECTRIC	
Cruise Control with speed limiter	● DIESEL	● DIESEL	● DIESEL	● DIESEL
Rear parking sensors	●	●		
Front & Rear (360°) perimeter parking sensors		●		
Rear parking camera with static gridlines				●
Rear parking camera pre-disposition (includes camera for connection)			●	
Rear parking camera with dynamic gridlines		●		
12 volt socket in cabin	●	●	●	●
USB sockets in cabin		●		
Electronic Power Steering (EPS)	●	●	●	●
Reach adjustable steering wheel	●	●	●	●
Electric Parking Brake	● ELECTRIC		● ELECTRIC	
Halogen Headdlamp with integrated daytime running lights	●	●	●	●
High level third brake light	●	●	●	●
Automatic on/off headlight control		●		
Automatic two-speed and intermittent front wipers		●		
Twin lens door mirrors with electrically adjustable and heated upper mirror	●	●	●	●
Fog lights		●		
Keyless entry and start		●		
Wireless Charging		●		



VISIT US



TEST DRIVE



GET A QUOTE



CONFIGURE

# Equipment

● Standard Equipment   ○ Optional   P Optional as part of pack

Panel Van / Glazed Van / Crew Van		Incomplete Chassis / Platform / Crew Cab / B2B	
Ducato	Primo	Ducato	Ducato

## SAFETY AND SECURITY

Electronic Stability Control and ABS with Hill Start Assist, EBA and EBFD	●	●	●	●
Perimetric and volumetric, Thatcham category 1 approved alarm	●	●	●	●
Remote central locking with deadlocking	●	●	●	●
1x Remote (Piip) Key and 1x Mechanical	●		●	●
2x Remote (Piip) Key		●		
Dashboard mounted central locking push button and auto locking above 12 mph	●	●	●	●
Rolling code transponder immobiliser (Thatcham approved)	●	●	●	●
Lockable fuel cap (diesel versions only)	●	●	●	●
Automatic door unlocking in event of AEBs activation (upon stop)	●	●	●	●
Driver and front passenger's airbags	●	●	●	●
Height-adjustable 3-point pre-tensioner seat belts with force limiter (central seatbelt on dual passenger seat not height adjustable and no pre-tensioner)	●	●	●	●
High Beam Assist	●	●	●	●
Advanced Emergency Braking System	●	●	●	●
Lane Keeping Assist	●	●	●	●
Intelligent Speed Assistance	●	●	●	●
Driver Attention Alert level 4 (includes Driver Weariness Camera)	●	●	●	●
Automatic activation of hazard warning lights on major deceleration	●	●	●	●
Visible VIN at base of windscreen	●	●	●	●
Moving off information system (MOIS) & Blind spot information systems works (BSIS)	● 4.25T		● 4.25T	
Smart Tachograph & 56mph Speed Limiter	● 4.25T	● 4.25T	● 4.25T	● 4.25T

## DOORS AND WINDOWS

Twin unglazed rear doors, opening to 180°	● PANEL VAN	●		
Twin glazed & heated rear doors, opening to 180°	● GLAZED VAN			
Nearside sliding side loading door	●	●		
Laminated acoustic windscreen	●	●	●	●
Front windows tinted to 30% opacity	●	●	●	●
Glazing to row 2, 3 and nearside sliding side loading door	● GLAZED VAN			
Glazed rear nearside sliding side loading door	● CREW VAN			

# Equipment

● Standard Equipment   ○ Optional   P Optional as part of pack

	Panel Van / Glazed Van / Crew Van		Incomplete Chassis / Platform / Crew Cab / B2B	Dropside / Tipper
	Ducato	Primo	Ducato	Ducato
<b>SEATING</b>				
Driver's seat height, rake and reach adjustable with lumbar adjustment and armrest (6-Way)	●	●	●	●
Front seats with height-adjustable head restraints	●	●	●	●
Dual front passenger bench seat	●		●	●
Dual front passenger "Eat & Work" bench seat with underseat storage		●		
3-Seater 2nd Row with 3-point safety belts; Individually adjustable headrest; Black anti-slip and washable TPO Floor. Crew Van is a 6-seat configuration (3 + 3).	● CREW VAN			
Crepe Black trim with single stitching fabric upholstery	●		●	●
Crepe Black trim with backrest graphics, and double stitching (silver) fabric upholstery		●		
<b>INTERIOR FEATURES, STORAGE AND LOAD CARRYING</b>				
Dashboard - Mistral Black	●	●	●	●
Dashboard storage areas	●	●	●	●
Closed upper and open lower glove boxes	●	●	●	●
Front door pockets with 1.5 litre bottle holders	●	●	●	●
Two cup holders and mobile phone storage in centre of lower dashboard	●	●	●	●
Hard plastic floor protection in cabin	●	●	●	●
Roof trim in cabin	●	●	●	●
Overhead console with ceiling lamps	●	●	●	●
Full steel bulkhead with clothes hook	●	●	●	●
Load tie-down hooks in cargo area (6 in L2; 8 in L3; 10 in L4)	●	●		
<b>WHEELS, TYRES AND EXTERIOR STYLE</b>				
Puncture repair kit	●	●	●	●
Tyre pressure monitor	●	●	●	●
15" steel wheels with black centre caps	● LIGHT 140PS MANUAL	● LIGHT 140PS MANUAL	● LIGHT 140PS MANUAL	● LIGHT 140PS MANUAL
16" steel wheels with black centre caps	●	●	●	●
Black front and rear bumpers, side rubbing strips, exterior door handles and door mirrors	●	●	●	●
Aerodynamic kit featuring central spoiler, air guides and active Grille Shutter (Kit provides a CO2 saving and economy benefit)	●	●	●	●

\*Light\* 140PS Manual are those not designated as "heavy".



VISIT US



TEST DRIVE



GET A QUOTE



CONFIGURE

# Equipment

● Standard Equipment ○ Optional P Optional as part of pack

	PANEL VAN GLAZED VAN CREW VAN		INCOMPLETE CHASSIS; PLATFORM; DOUBLECAB; B2B		DROPSIDE TIPPER
	Ducato	Primo	Ducato	Ducato	
<b>INSTRUMENTS</b>					
Full 7" colour digital cluster	● ELECTRIC	●	● ELECTRIC		
Analogue cluster with central 3.5" digital black & white display	● DIESEL		● DIESEL		● DIESEL
Multi-function on-board trip computer	●	●	●		●
<b>CONVERSIONS</b>					
Electrical interface supply socket			●		●
Electrical - loom extension (1500mm) for conversions					●
Exclusion of the rear cab bulkhead			● PLATFORM CAB		
<p>Frame and cross-members in powder coated high-strength steel. Plywood load floor (12mm thick) with non-slip and scratch resistant resin coating.</p> <p>400mm high and 25mm thick anodised aluminium removable side and rear panels with recessed hinges.</p> <p>Integrated cabin protection made from powder coated high-strength steel. Two lateral lashing rings, and integrated lashing rings on load floor. Rear plastic mudguards.</p>					● DROPSIDE
<p>Frame and cross-members in powder coated high-strength steel. Load floor made from powder coated high-strength steel.</p> <p>400mm high anodised aluminium opening (180°) side panels and tipping pins with self-lubricating hinges.</p> <p>Tailboard features dual-mode hinge enabling both tip-through and tip-over functions.</p> <p>Tipping angle of 45° with lifting time of 30-40 seconds.</p> <p>Integrated cabin protection made from powder coated high-strength steel. Non-protruding 4-stage telescopic cylinder hydraulic ram. Six integrated load lashing rings resistant to 800 daN. Rear plastic mudguards.</p>					● TIPPER
<b>ELECTRIC VEHICLE SPECIFIC</b>					
22KW On Board Charger with Mode 3 charging cable - 6 metres (for use with wallbox)	● ELECTRIC		● ELECTRIC		
Remote temperature pre-conditioning (requires e-Remote Control service subscription)	● ELECTRIC		● ELECTRIC		
AVAS: Acoustic Vehicle Alerting System - generates a sound when travelling at low speed, audible outside the vehicle for pedestrian safety	● ELECTRIC		● ELECTRIC		

# Options

- Standard Equipment
- Not Available

	Option Code	Panel Van		Glazed Van	Chassis Crew Cab / B2B	Tipper / Dropside
		Ducato	Primo	Ducato	Ducato	Ducato
<b>DOORS AND WINDOWS</b>						
270 degree opening rear doors	619 <sup>F</sup>	£270	£270	£270	-	-
Twin glazed rear doors (windows fixed & heated) [not available on L2H1 Panel Van]	029+519 <sup>G,O</sup>	£400 Diesel £320 Electric	£400 Diesel £320 Electric	●	-	-
2nd sliding side door (unglazed)	055	£530	£530	-	-	-
Glazed sliding side door [not available on L2H1 Panel Van]	520	£180	£180	●	-	-
2nd sliding side door (glazed) [not available on L2H1 Panel Van]	520+055	£710	£710	£710	-	-
Sliding glass in sliding doors [not available on L2H2 Glazed Van]	644	-	-	£300	-	-
<b>WHEELS, TYRES AND SUSPENSION</b>						
Double leaf rear suspension [standard on 4.25T versions. Not available on L2H1 Panel Van]	077	£110	£110	-	-	-
Oversized rear suspensions	4GM	-	-	-	£270	-
All-Season Mud & Snow Tyres	144 <sup>L,M,V</sup>	£350	£350	£350	£350	£350
Spare wheel	4DH <sup>F</sup>	£180	£180	£180	£180	£180
16" Alloy Wheels - Diamond Black [not available on Heavy nor 4.25T versions]	431 <sup>F,K,J</sup>	£500	£500	-	-	-
Full wheel hub caps [not available with 144]	878 <sup>F,K,J</sup>	£40	£40	-	-	-
<b>INTERIOR</b>						
Front side and window airbags with single front passenger seat with armrest and adjustable lumbar support [required 8RS]	505+297+454 & C] <sup>C,E,G,U,V</sup>	£540	-	£540	-	-
Remove overhead shelf	55Q	£0	£0	£0	-	-
Eco leather steering wheel	320 <sup>F</sup>	£220 Diesel	£220 Diesel			
<b>TECHNOLOGY</b>						
Multimedia featuring 7" Colour touchscreen with DAB radio, Bluetooth* handsfree, USB socket, bi-tuner, Apple CarPlay™ and Android Auto™ [standard on electric versions]	C7D	£400 Diesel	-	£400 Diesel	£400 Diesel <sup>F</sup>	£400 Diesel
Digital central rearview mirror [including rearview camera with dynamic gridlines (316)]	GRG	£600	£600	-	-	-
Rearview camera with dynamic gridlines	316	£200	●	£200	-	-
Blind spot assist & rear cross path detection including power folding mirrors [standard on 4.25T derivatives]	XAN	£450 Diesel	£450 Diesel	-	-	-

<sup>F</sup>Also available as part of Cargo Pack | <sup>G</sup>Also available as part of Worksite Pack | <sup>V</sup>Not available on B2B

NOTE	A	B	C	D	E	F	G	H	I	J	K	L	M	N	O	P	Q	R	S	T	U	V
THE OPTION CANNOT BE ORDERED WITH	6JA	OTL	OTK	34I	8JP	AVT	AWS	4YV	AWE	I44	505	029+519	5F8	042	5BF	4XH	4EA	MBP+90I	320	4BJ	878	43I



VISIT US



TEST DRIVE



GET A QUOTE



CONFIGURE

# Options

- Standard Equipment
- Not Available

	Option Code	Panel Van		Glazed Van	Chassis Crew Cab / B2B	Tipper / Dropside
		Ducato	Primo	Ducato	Ducato	Ducato
<b>TECHNOLOGY</b>						
Electric parking brake [Diesel only]	026 <sup>C</sup>	£TBA	£TBA	£TBA	£TBA	£TBA
Additional Remote (Piip) Key	4YV <sup>9</sup>	£50	£50	£50	-	-
<b>EXTERIOR</b>						
Power Folding Exterior Mirrors	341 <sup>N</sup>	£100	£100	£100	£100	£100
External rear-view mirrors for body size kit 2.35 m	042 <sup>D</sup>	-	-	-	£50	-
DAB radio antenna integrated in right external mirror	54Q	£530 Diesel £130 Electric	-	£530 Diesel £130 Electric	-	-
Body Colour Front Bumper with Black Skid Plate and front fog lights [not available on 4.25T versions]	MBP+901 <sup>ET</sup>	£400	£400	-	-	-
Wheel Arches Mouldings - Chassis [only available on Heavy versions excl. Crew Cab]	4BJ <sup>R</sup>	-	-	-	£100	-
Wheel Arches Mouldings - Van [only available on Heavy versions]	4BJ <sup>R</sup>	£200	-	-	-	-
Fixed towing hook [not available on electric versions or platform cabs]	6JA <sup>R</sup>	£600 Diesel	£600 Diesel	£600 Diesel	£600 Diesel	£600 Diesel
<b>CARGO</b>						
Remove bulkhead	72X	£0	£0	£0	-	-
Glazed bulkhead	199	£100	£100	-	-	-
<b>CONVERSION OPTIONS</b>						
Smart tachograph	0TK <sup>K</sup>	£700	£700	£700	£700	£700
Smart tachograph and speed limiter exclusions	0TL <sup>P</sup>	£0	£0	£0	-	-
Exclusion speed limiter	4XH <sup>R</sup>	£0	£0	£0	-	-
Speed limiter (56 mph)	58E	£0	£0	£0	£0	£0
Speed limiter (62 mph) [4.25T versions only]	5BF <sup>U</sup>	£0 Diesel	£0 Diesel	£0 Diesel	-	-
Electrical - loom extension (1500mm) for conversions	39I	-	-	-	£50	-
Loose rear tail-lights ready for assembly [not available with 6JA]	4EA <sup>A</sup>	-	-	-	£100	-

<sup>C</sup>On Diesel versions this brings in 026 Electric, Handbrake and Premium fabric trim. On Primo and Electric versions upgraded trim and 026 are already standard so there is no charge for omission of bulkhead.  
<sup>9</sup>Included when ordering XAN Blind Spot Detection

NOTE	A	B	C	D	E	F	G	H	I	J	K	L	M	N	O	P	Q	R	S	T	U	V
THE OPTION CANNOT BE ORDERED WITH	6JA	0TL	0TK	341	8JP	AVT	AWS	4YV	AWE	144	505	029+519	5F8	042	58F	4XH	4EA	MBP+901	320	4BJ	878	43I



VISIT US



TEST DRIVE



GET A QUOTE



CONFIGURE

# Options

● Standard Equipment

- Not Available

Option Code	Panel Van		Glazed Van	Chassis Crew Cab / B2B	Tipper / Dropside
	Ducato	Primo	Ducato	Ducato	Ducato
<b>PACKS</b>					
<b>Interior Upgrade Pack:</b> - Crepe Black trim with backrest graphics, and double stitching (silver) Fabric - Compartment under Driver's Seat - Full 7" colour digital cluster - Eat and Work bench seat					
8RS	£350	●	-	-	-
<b>Techno Pack:</b> - 10" Touchscreen radio with TomTom* Navigation, Bluetooth, Android Auto™ / Apple CarPlay™ - Double USB charging port (type A + type C) - Automatic climate control					
AW9	£1,150 Diesel £900 Electric	●	£1,150 Diesel £900 Electric	£1,150 Diesel £900 Electric	£1,150 Diesel
<b>Handsfree Pack:</b> - Keyless entry & go - Electric parking brake - 230V Cabin socket <small>[only available on diesel versions]</small>					
AW5 <sup>EHK</sup>	£500 Diesel	-	£500 Diesel	£500 Diesel	£500 Diesel
<b>Worksite Pack:</b> - Traction Plus – Traction + Hill Descent Control - Spare wheel - All-Season M&S Tyres					
AVT <sup>UV</sup>	£450	£450	-	£450	£450
<b>Cargo Pack (L2/L3):</b> - 12v Socket in cargo bay - 270 Rear opening rear doors - Rear / sliding door activated central LED in cargo area - Half-height Wall Protection					
C7G	£400	£400	-	-	-
<b>Cargo Pack (L4):</b> - 12v Socket in cargo bay - 270 Rear opening rear doors - Rear / sliding door activated central LED in cargo area					
C7F	£320	£320	-	-	-
<b>Conversion Pack:</b> - Transformation socket - 220A Alternator - 105Ah Battery <small>[only available on diesel versions]</small>					
AWE <sup>LO</sup>	£230 Diesel	£230 Diesel	£230 Diesel	£230 Diesel	-
<b>Level 2 Autonomous Driving:</b> - High Beam Recognition - Rain & Dusk Sensor - Adaptive Cruise Control - Speed Limiter - Lane Centering Traffic Jam Assist					
8JP <sup>G, KM, R, S</sup>	£1,050 Diesel Automatic £700 Electric	-	-	-	-
<b>Easy Driving Pack:</b> - Adaptive Cruise Control (30km/h) - Speed Limiter - Intelligent High Beam Assist - Rain & Dusk Sensor					
5F8 <sup>F</sup>	£500	-	-	-	-

<b>NOTE</b>	A	B	C	D	E	F	G	H	I	J	K	L	M	N	O	P	Q	R	S	T	U	V
<b>THE OPTION CANNOT BE ORDERED WITH</b>	6JA	OTL	OTK	34I	8JP	AVT	AWS	4YV	AWE	I44	505	029+519	5F8	042	5BF	4XH	4EA	MBP+901	320	4BJ	878	43I



VISIT US



TEST DRIVE



GET A QUOTE



CONFIGURE

E-DUCATO & DUCATO



VISIT US



TEST DRIVE



GET A QUOTE



CONFIGURE

# Safety Features



## Digital Rearview Camera\*

- The digital rearview camera comes as a further help when driving and parking vans.
- The central 8,9" LCD high-resolution display provides an unobstructed and ultra-clear view of the road behind, thanks to a wide-angle, high-definition camera located inside the rear third stop lamp.
- Ability to function both as a digital LCD display or a standard optical rearview mirror.
- Auto-dimming, activation and brightness control by buttons located on mirror.



## 360° Perimeter Parking Sensors\*

- The 360° Perimeter Parking Sensors alert the driver both acoustically, and visually when the vehicle is approaching obstacles or going through tight spaces.
- Depending on vehicle length there are either 14, or 16 sensors surrounding the vehicle. These are located on the front and rear bumpers and also within the side mouldings.
- Visual warning is displayed on the cluster screen by the vehicle shape surrounded by three proximity bands, showing the vehicle distance from obstacles, while the acoustic (beep) warning increases in frequency as the obstacle comes nearer, becoming a continuous beep as the obstacle distance is lower than 30 centimeters.

Note: Fiat Pro driver assistance systems are intended to support the driver within the system-imminent limitations. The driver remains responsible for the driving task at all times.

\*Option available at additional cost

\*\* Standard on on N2 models



VISIT US



TEST DRIVE



GET A QUOTE



CONFIGURE

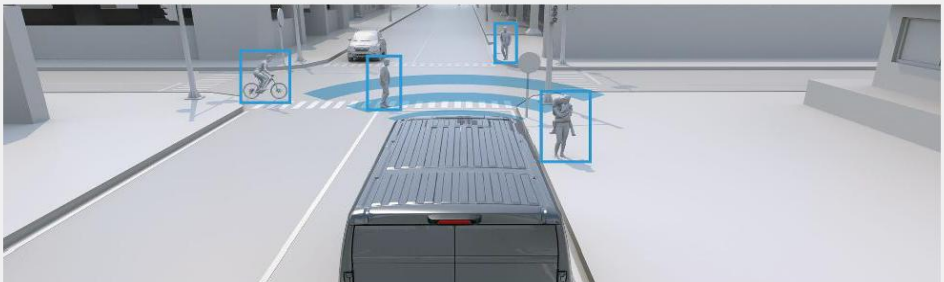


### **Blind Spot Information System (BSIS)\*\***

Audio and visual warnings will alert the driver in case the vehicle approaches an obstacle or has to go through narrow spaces. The audible warning will keep beeping with increased intensity as the obstacle is nearing and will decrease as soon as the obstacle is out of reach.

### **Moving Off Information System (MOIS)\*\***

The Moving off information system and Blind spot information systems works together in order to allow the recognition of side obstacles inside the blind side area opposite to driver's position. Driver is alerted by a visual warning on cluster and the mirrors, when approaching obstacles located into the blind lateral area.



### **Advanced Emergency Braking System (AEBS)**

This system alerts the driver of a potential collision through a combination of visual and then audible warnings. Should the driver fail to react, autonomous emergency braking is triggered to help mitigate/avoid the impact by reducing the speed of the vehicle. AEBS provides additional assistance to optimise braking performance while a dynamic brake support function boosts pressure to help further minimise stopping distances.

# Colours



# Wheels



**15" steel wheels with half wheel cover**

Standard on Ducato



**15" steel wheels with fullsize wheel cover**



**16" steel wheels with fullsize wheel cover**



**16" alloy wheels**

# Interiors

**Standard - Crepe Black trim with single stitching**



**Primo versions feature Crepe Black trim with backrest graphics, and double stitching (silver).**

Also available as an option.



# Technical

## Electric Engine

### Battery Electric Vehicle 110kWh

#### MOTOR

Torque Nm	410 Nm
Max power CEE (kW (hp))	270ho (205kW)

#### BATTERY

Chemistry	Lithium-ion 110 kWh
Gross/Net Capacity	110kWh (97.8kWh)
Battery Warranty	8 years / 100,000 miles / 70% capacity

#### TRANSMISSION

Gearbox	Automatic electric drive with fixed gear ratio
---------	--

#### STEERING

Electric power steering  
Turning Circles: Long (L3) And Extra-Long (L4) wheelbase 14.28m

#### SUSPENSION

Front: Pseudo-Macpherson type with wishbones, coil springs, telescopic shock absorbers and anti-roll bar  
Rear: rigid tubular axle with parabolic ongtitudinal leaf springs, telescopic shock absorbers and flexible side buffers

#### BRAKES FRONT/REAR

Front (ventilated) and rear disc brakes - Electric Parking Brake (Rear)

#### SERVICE

Every 1 Year or 16,000 miles whichever comes first

#### PERFORMANCE (ALL FIGURES DRIVER ALONE)

	L3H2 3.5T	L3H2 4.25T	L3H3 4.25T	L4H2 4.25T	L4H3 4.25T	L3H1 4.25T CHASSIS
WLTP Range (Combined)	235	263	254	262	252	Depends on conversion
Max speed (mph)	81	56	56	56	56	56
Acceleration (0-62 mph)	10s	N/A	N/A	N/A	N/A	N/A

#### CHARGING TIMES

Single Phase Wallbox (7.4kW) AC - Type 2 Socket	16h 40min [100%]
Three Phase Wallbox (22kW) AC - Type 2 Socket	6h 05min [100%]
Rapid Charging (50kW) DC- CCS Socket	1h 55min [5 to 80%]
Rapid Charging (150kW) DC - CCS Socket	55min [5 to 80%]

\* All N2 vehicles are legally required to be speed limited to 56mph.



VISIT US



TEST DRIVE



GET A QUOTE



CONFIGURE

# Electric Range

COMBINED RANGE (CALCULATED)		CITY RANGE (CALCULATED)		ELECTRIC ENERGY CONSUMPTION	
Combined	Combined	Combined	Combined	Combined	City
km	miles	km	miles	(Wh/km)	(Wh/km)

ELECTRIC						
Panel Van L3H2 3.5T Heavy Electric 270hp Automatic	378	235	537	334	294	207
Panel Van L3H2 4.25T Electric 270hp Automatic	424	263	504	313	262	220
Panel Van L3H3 4.25T Electric 270hp Automatic	409	254	488	303	271	227
Panel Van L4H2 4.25T Electric 270hp Automatic	422	262	501	311	263	222
Panel Van L4H3 4.25T Electric 270hp Automatic	406	252	491	305	273	226
Glazed Van L4H2 4.25T Electric 270hp Automatic	422	262	501	311	263	222
Chassis Cab L3H1 4.25T Electric 270hp Automatic	N/A*	N/A*	N/A*	N/A*	N/A*	N/A*

**Legal Notice:**

As all E-Ducato vans are homologated as Heavy and are not subject to WLTP testing, the range and electric consumption figures mentioned are calculated using WLTP Test Procedure methodology, on which the basis of all new Light Commercial or Passenger vehicles up to a GVW of 3500kgs are type approved, from 1 September 2018. The figures may vary depending on actual conditions of use and on differing factors such as: speed, thermal comfort on board the vehicle, driving style and outside temperature. The charging time depends in particular, on the power of the charger on board the vehicle, the charging cable and the type of cable used. Please contact your dealer or refer to [www.fiatprofessional.com/uk](http://www.fiatprofessional.com/uk) for further information.

Actual range and consumption will depend on payload, weather, driving conditions, driving styles etc. and these published figures can only be used as a guide.

\*Chassis figures are subject to the weight of the conversion fitted.

Fuel consumption and CO2 figures are provided for comparative purposes only and may not reflect real life driving results, which will depend upon a number of factors including the accessories fitted (post-registration), variations in weather, driving styles and vehicle load. Only compare fuel consumption and CO2 figures with other vehicles tested to the same technical procedure.

These figures were obtained after the battery had been fully charged. The E-Ducato is a battery electric vehicle requiring mains electricity for charging. Figures shown are for comparability purposes. Only compare fuel consumption, CO2 and electric range figures with other vehicles tested to the same technical procedures. Values may not reflect real life driving results, which will depend upon a number of factors including the starting charge of the battery, accessories fitted (post-registration), variations in weather, driving styles and vehicle load.



VISIT US



TEST DRIVE



GET A QUOTE



CONFIGURE

# Technical

## Diesel Engine

	140hp		180hp	
<b>ENGINE</b>				
Fuel system	Diesel			
Capacity (cc)	2184			
Cylinders / Valves	4 / 16			
Max power CEE (kW (hp)/rpm)	103kW (140hp) / 3500rpm		132kW (180hp) / 3500rpm	
Max torque CEE (Nm (lb/ft)/rpm)	350Nm (258lb/ft) / 1400rpm	380Nm (280lb/ft) / 1400rpm	380Nm (280lb/ft) / 1500rpm	450Nm (332lb/ft) / 1500rpm
Bore and stroke (mm)	83.8 x 99			
Euro status	Euro 6E BIS			
Stop & Start system	Stop & Start System			
Servicing	'Oil & Filter change (normal usage) - Every 2 Years or 16,000 miles, whichever comes first			
<b>TRANSMISSION</b>				
Gearbox	Manual	Automatic	Manual	Automatic
Number of gears	6	8	6	8
Driven wheels	FWD			
<b>STEERING</b>	Electric power steering Turning Circles: Medium (L2) wheelbase 12.5m Long (L3) wheelbase 14.3m and Extra-Long (L4) wheelbase 15.3m			
<b>SUSPENSION</b>	Front: Pseudo-Macpherson type with lower wishbone struts, coil springs, telescopic hydraulic dampers and anti-roll bar Rear: 3.5T GVW versions: Longitudinal leaf springs with telescopic hydraulic dampers 4.25T GVW versions: Reinforced twin leaf springs with telescopic hydraulic dampers			
<b>BRAKES FRONT/REAR</b>	Manual Park Brake - Ventilated discs (Front) / Solid discs (Rear) Electric Park Brake (EPB) - Ventilated discs (Front) / Ventilated discs (Rear)			
<b>FUEL TANK CAPACITY LITRES (GALLONS)</b>	90 (19.8)			
<b>ADBLUE TANK CAPACITY LITRES (GALLONS)</b>	19 (4.1)			

BlueHDl vehicles will need regular AdBlue® top-ups between servicing requirements. An indicator integrated into the on-board computer will warn you when you need to top-up.

\*Arduous usage defined as engaged in frequent short stop-start driving i.e. Multi-drop delivery courier



VISIT US



TEST DRIVE



GET A QUOTE



CONFIGURE

# CO<sub>2</sub> & Fuel Economy

	CO2 Combined		WLTP Economy Combined			
	Vehicle low VL (g/km)	Vehicle High VH (g/km)	Vehicle Low VL (/100km)	Vehicle High VH (/100km)	Vehicle low VL (mpg)	Vehicle High VH (mpg)
<b>PANEL VANS</b>						
L2H1 3.5T Diesel 140hp Manual	165	243	6.3	9.3	44.8	30.4
L2H2 3.5T Diesel 140hp Manual	165	243	6.3	9.3	44.8	30.4
L2H2 3.5T Diesel 140hp Automatic	184	315	7.0	12.0	40.4	23.5
L3H2 3.5T Diesel 140hp Manual	165	243	6.3	9.3	44.8	30.4
L3H2 3.5T Diesel 140hp Automatic	184	315	7.0	12.0	40.4	23.5
L3H3 3.5T Diesel 140hp Manual	165	243	6.3	9.3	44.8	30.4
L3H2 3.5T Heavy Diesel 140hp Manual	165	247	6.3	9.4	44.8	30.1
L4H2 3.5T Heavy Diesel 140hp Manual	165	247	6.3	9.4	44.8	30.1
L4H3 3.5T Heavy Diesel 140hp Manual	165	247	6.3	9.4	44.8	30.1
L4H2 3.5T Heavy Diesel 180hp Automatic	178	328	6.8	12.5	41.5	22.6
L4H2 4.25T Diesel 180hp Automatic	201	348	7.6	13.2	37.2	21.4
L4H3 4.25T Diesel 180hp Manual	192	321	7.3	12.2	38.7	23.2
L4H3 4.25T Diesel 180hp Automatic	201	348	7.6	13.2	37.2	21.4
<b>CREW VAN</b>						
L3H2 3.5T Diesel 140 Manual	165	243	6.3	9.3	44.8	30.4
<b>GLAZED VANS</b>						
L3H2 3.5T Diesel 140hp Manual	169	306	6.4	11.6	44.1	24.4
L4H2 4.25T Diesel 140hp Manual	192	314	7.3	11.9	38.7	23.7
L4H2 4.25T Diesel 180hp Automatic	201	348	7.6	13.2	37.2	21.4
<b>INCOMPLETES</b>						
Chassis Cab L2H1 3.5T Diesel 140 Manual	169	306	6.4	11.6	44.1	24.4
Chassis Cab L2H1 3.5T Heavy Diesel 140 Manual	169	306	6.4	11.6	44.1	24.4
Chassis Cab L3H1 3.5T Diesel 140 Manual	169	306	6.4	11.6	44.1	24.4
Chassis Cab L3H1 3.5T Heavy Diesel 140 Manual	169	306	6.4	11.6	44.1	24.4
Chassis Cab L3H1 3.5T Diesel 140 Automatic	184	315	7.0	12.0	40.4	23.5
Chassis Double Cab L3H1 3.5T Heavy Diesel 140 Manual	169	306	6.4	11.6	44.1	24.4
Platform Cab L3H1 3.5T Diesel 140 Manual	169	306	6.4	11.6	44.1	24.4
Platform Cab L3H1 3.5T Heavy Diesel 140 Manual	169	306	6.4	11.6	44.1	24.4
Platform Cab 3.5T L3H1 Diesel 140hp Automatic	201	348	7.6	13.2	37.2	21.4
B2B 3.5T Diesel 140 Manual	169	306	6.4	11.6	44.1	24.4
B2B 4.25T Diesel 180 Automatic	201	348	7.6	13.2	37.2	21.4
Dropside L3H1 3.5T Diesel 140 Manual	169	306	6.4	11.6	44.1	24.4
Dropside L4H1 3.5T Heavy Diesel 140 Manual	169	306	6.4	11.6	44.1	24.4
Dropside Double Cab L3H1 3.5T Heavy Diesel 140 Manual	169	306	6.4	11.6	44.1	24.4
Tipper L2H1 3.5T Heavy Diesel 140 Manual	169	306	6.4	11.6	44.1	24.4

# Weights & Loads

	Gross Vehicle Weight (GVW)	Mass in Running Order (MIRO)	Kerb weight or Minimum Mass	Maximum indicative payload	Max plated front axle	Max plated rear axle	Gross Train Weight (GTW)	Maximum braked towing weight	Max. unbraked towing weight	Maximum towball weight	Number of Seats
	INCLUDES DRIVER	NO DRIVER	NO DRIVER								
<b>PANEL VANS</b>											
Panel Van L3H2 3.5T Heavy Electric 270hp Automatic	3500	2845	2770	730	2100	2400	5500	2400	750	100	3
Panel Van L3H2 4.25T Electric 270hp Automatic	4250	2845	2770	1480	2100	2400	5500	2400	750	100	3
Panel Van L3H3 4.25T Electric 270hp Automatic	4250	2870	2795	1455	2100	2400	5500	2400	750	100	3
Panel Van L4H2 4.25T Electric 270hp Automatic	4250	2890	2815	1435	2100	2400	5500	2400	750	100	3
Panel Van L4H3 4.25T Electric 270hp Automatic	4250	2845	2770	1480	2100	2400	5500	2400	750	100	3
Panel Van L2H1 3.5T Diesel 140 Manual	3500	2125	2050	1450	1880	2000	6000	2500	750	100	3
Panel Van L2H2 3.5T Diesel 140 Manual	3500	2150	2075	1425	1880	2000	6000	2500	750	100	3
Panel Van L2H2 3.5T Diesel 140 Automatic	3500	2210	2135	1365	1960	2000	6000	2500	750	100	3
Panel Van L3H2 3.5T Diesel 140 Manual	3500	2200	2125	1375	1880	2000	6000	2500	750	100	3
Panel Van L3H2 3.5T Diesel 140 Automatic	3500	2260	2185	1315	1960	2000	6000	2500	750	100	3
Panel Van L3H3 3.5T Diesel 140 Manual	3500	2225	2150	1350	1880	2000	6000	2500	750	100	3
Panel Van L3H2 3.5T Heavy Diesel 140 Manual	3500	2240	2165	1335	2100	2400	6000	3000	750	120	3
Panel Van L4H2 3.5T Heavy Diesel 140 Manual	3500	2285	2210	1290	2100	2400	6000	3000	750	120	3
Panel Van L4H3 3.5T Heavy Diesel 140 Manual	3500	2315	2240	1260	2100	2400	6000	3000	750	120	3
Panel Van L4H2 3.5T Heavy Diesel 180 Automatic	3500	2290	2215	1285	2100	2400	6500	3000	750	120	3
Panel Van L4H2 4.25T Diesel 180 Automatic	4250	2295	2220	2030	2100	2400	6500	2250	750	100	3
Panel Van L4H3 4.25T Diesel 180 Manual	4250	2310	2235	2015	2100	2400	6500	2250	750	100	3
Panel Van L4H3 4.25T Diesel 180 Automatic	4250	2325	2250	2000	2100	2400	6500	2250	750	100	3
<b>CREW VANS</b>											
L3H2 3.5T Diesel 140 Manual	3500	2340	2265	1235	1880	2000	6000	2500	750	100	6



VISIT US



TEST DRIVE



GET A QUOTE



CONFIGURE

# Weights & Loads

	Gross Vehicle Weight (GVW)	Mass in Running Order (MIRO) <small>INCLUDES DRIVER</small>	Kerb weight or Minimum Mass <small>NO DRIVER</small>	Maximum indicative payload <small>NO DRIVER</small>	Max plated front axle	Max plated rear axle	Gross Train Weight (GTW)	Maximum braked towing weight	Max. unbraked towing weight	Maximum towball weight	Number of Seats
<b>GLAZED VANS</b>											
Glazed Van L4H2 4.25T Electric 270hp Automatic	4250	2890	2815	1435	2100	2400	5500	2400	750	100	3
Glazed Van L3H2 3.5T Diesel 140 Manual	3500	2195	2120	1380	1850	2000	6000	2500	750	100	3
Glazed Van L4H2 4.25T Diesel 140 Manual	4250	2275	2200	2050	2100	2400	6500	2250	750	100	3
Glazed Van L4H2 4.25T Diesel 180 Automatic	4250	2295	2220	2030	2100	2400	6500	2250	750	100	3
<b>INCOMPLETES</b>											
Chassis Cab L3H1 4.25T Heavy Electric 270hp Automatic	4250	2555	2480	1770	2100	2400	5500	2400	750	100	3
Chassis Cab L2H1 3.5T Diesel 140 Manual	3500	1840	1765	1735	1850	2000	6000	2500	750	100	3
Chassis Cab L2H1 3.5T Heavy Diesel 140 Manual	3500	1880	1805	1695	2100	2400	6500	3000	750	120	3
Chassis Cab L3H1 3.5T Diesel 140 Manual	3500	1860	1785	1715	1850	2000	6000	2500	750	100	3
Chassis Cab L3H1 3.5T Heavy Diesel 140 Manual	3500	1900	1825	1675	2100	2400	6500	3000	750	120	3
Chassis Cab L3H1 3.5T Diesel 140 Automatic	3500	1920	1845	1655	1960	2000	6000	2500	750	100	3
Chassis Double Cab L3H1 3.5T Heavy Diesel 140 Manual	3500	2115	2040	1460	2100	2400	6500	3000	750	120	7
Platform Cab L3H1 3.5T Diesel 140 Manual	3500	1835	1760	1740	1850	2000	6000	2500	750	100	3
Platform Cab L3H1 3.5T Heavy Diesel 140 Manual	3500	1875	1800	1700	2100	2400	6500	3000	750	120	3
Platform Cab 3.5T L3H1 Diesel 180hp Automatic	3500	1920	1845	1655	2100	2400	6500	3000	750	120	3
B2B 3.5T Diesel 140 Manual	3500	N/A	N/A	N/A	1850	N/A	N/A	N/A	N/A	N/A	3
B2B 4.25T Diesel 180 Automatic	4250	N/A	N/A	N/A	2100	N/A	N/A	N/A	N/A	N/A	3
Dropside L3H1 3.5T Diesel 140 Manual	3500	2100	2025	1475	1880	2000	6000	2500	750	100	3
Dropside L4H1 3.5T Heavy Diesel 140 Manual	3500	2175	2100	1400	2100	2400	6500	3000	750	120	3
Dropside Double Cab L3H1 3.5T Heavy Diesel 140 Manual	3500	2285	2210	1290	2100	2400	6500	3000	750	120	7
Tipper L2H1 3.5T Heavy Diesel 140 Manual	3500	2430	2355	1145	2100	2400	6500	3000	750	120	3

# Dimensions

	L2		L3		L4	
	H1	H2	H2	H3	H2	H3
<b>EXTERIOR DIMENSIONS (mm)</b>						
Wheelbase	3450		4035			
Overall length	5413		5998		6363	
Overall height (Electric versions)	2254	2524	2524 (2592)	2764	2534 (2612)	2779 (2850)
Width (excluding door mirrors)	2050					
Width (including door mirrors)	2690					
Width (incl. door mirrors) with extended mirrors (Option RX05)	2770					
Front overhang	948					
Rear overhang	1015				1380	
Minimum Ground Clearance	158	157	155	154	221	181

<b>INTERIOR DIMENSIONS (mm)</b>						
Load length at floor	3120		3705		4070	
Load length at mid-height with bulkhead	2914		3555		3920	
Load width (maximum)	1870					
Load width between wheel arches	1422					
Load height (maximum)	1662	1932	1932	2172	1932	2172
Loading height (Minimum to maximum)	535 - 560					
Volume (m <sup>3</sup> )	10.0	11.5	13.0	15.0	15.0	17.0

<b>INTERIOR DIMENSIONS - CREW VAN</b>						
Load length at floor	-		2535	-		
Load length at floor under bench	-		3075	-		
Load width under bench	-		1220	-		
Load height under bench	-		110	-		
Volume (m <sup>3</sup> )	-		TBC	-		

<b>DOOR DIMENSIONS (mm)</b>						
Side door aperture width	1250					
Side door aperture height	1485	1755				
Rear door aperture width	1562					
Rear door aperture height	1520	1790	1790	2030	1790	2030

<b>CHASSIS CAB DIMENSIONS (mm)</b>						
VERSION	L2H1		L3H1		DOUBLE CAB	PLATFORM CAB
Height	2153					
Front overhang	948					
Rear overhang	860					

<b>CHASSIS CAB DIMENSIONS (mm)</b>						
VERSION	L3H1 DROPSIDE		L4H1 DROPSIDE		L3H1 DOUBLE CAB DROPSIDE	L2H1 TIPPER
Wheelbase	4035					
Overall length	6318		6693		5738	5696
Overall height including headboard	2424					2335
Width (excluding door mirrors)	2100					
Flatbed interior length	3833		4198		2398	3160
Flatbed interior width	2034					2000
Height of sideboards & tailgate	400					390
Thickness of sideboards & tailgate	25					
Loading Height	985					985

☰ E-DUCATO & DUCATO



VISIT US



TEST DRIVE



GET A QUOTE



CONFIGURE

# Factory conversions

## Dropside\*



The Ducato dropside features an open platform with fold down side panels to make loading and unloading of goods effortless.

- Frame and cross-members in powder coated high-strength steel.
- Plywood load floor (12mm thick) with non-slip and scratch resistant resin coating.
- 400mm high and 25mm thick anodised aluminium removable side and rear panels with recessed hinges. Edge profiled for tarpaulin fixation.
- Integrated cabin protection made from powder coated high-strength steel with perforations to improve driver's visibility. Two lateral lashing rings.
- Integrated lashing rings on load floor (conforming to EN 12640 standards) secured with rubber plugs to avoid vibration.
- Rear plastic mudguards.

\*Pictures do not show UK specification, Alloy wheels are not available in the UK



VISIT US



TEST DRIVE



GET A QUOTE



CONFIGURE

## Tipper\*



The Ducato tipper has an open platform that can be easily lifted to dump out the load. Our factory converted tipper is a one-way design.

- Frame and cross-members in powder coated high-strength steel.
- Load floor made from powder coated high-strength steel, with “curved protection” at the rear which helps guide the flow of transported material as well as providing additional structural strength when loading and unloading.
- 400mm high anodised aluminium opening (180°) side panels and tipping pins with self-lubricating hinges and integrated roping hooks.
- Tailboard features dual-mode hinge enabling both tip-through and tip-over functions. Rear pillars are made from high-strength steel and feature a patented locking mechanism.
- Tipping angle of 45° with lifting time of 30-40 seconds.
- Integrated cabin protection made from powder coated high-strength steel with perforations to improve driver’s visibility.
- Non-protruding 4-stage telescopic cylinder hydraulic ram. Control unit features anti-foam system for maximum tipping capability. 12-Volt System compliant to 2006/42/EC and 2009/19/EC with a pressure of 120 bar to limit overloading.
- Six integrated load lashing rings resistant to 800 daN.
- Rear plastic mudguards.



  
**CONNECTED  
SERVICES**

A PRO LIKE YOU

**FIAT**  
CONNECTED SERVICES



VISIT US



TEST DRIVE



GET A QUOTE



CONFIGURE

# CONNECTED SERVICES



## MY:ASSISTANT SAFETY AT YOUR FINGERTIPS

Services include Mopar® Connect Crash Assistance, available 24 hours a day, Roadside Assistance support and Theft Assistance that can provide GPS coordinates and will immobilise the engine when the vehicle stops to facilitate recovery.



## MY:REMOTE CONTROL YOUR VAN FROM A DISTANCE

Finding your vehicle has never been easier. Locate it on the map and follow the fastest route to get there. You can receive alerts when your vehicle leaves a designated area or if the person driving it is travelling at excessive speed.



## MY:CAR KEEP YOUR VEHICLE IN PERFECT CONDITION

Provides up-to-date information about your vehicle such as the fuel level or tyre pressure to ensure that every journey is safe. Check the Vehicle Health Report with useful information and tips on how to take care of it.

## MY:JOURNEY TURN YOUR ITINERARIES INTO TRAVEL EXPERIENCES

My:Journey keeps track of your vehicles movements and allows you to view trips in a dashboard, add customised notes, merge multiple trips into one, and categorise trips as personal or business; to form a unique travel experience.

## MY:eCHARGE MANAGE PUBLIC AND PRIVATE CHARGING

A package which, through the use of dedicated features and mobile apps, allows you to find, use, pay and track recharges at public charging stations (easy Charge), as well as being able to manage charging with a Connected Wallbox.

## MY: FLEETMANAGER SIMPLIFY YOUR FLEET MANAGEMENT

my:FleetManager allows you to manage company fleets of cars and light commercial vehicles with maximum efficiency and safety. The most advanced Fleet Management solutions and Car Sharing solutions for car sharing among employees.



# Glossary of terms

## Plated weight

The maximum weight to which a vehicle or an axle may be loaded, determined either by the design of the components or by legislation. All commercial vehicles must carry a manufacturer's 'plate' showing the vehicle and axle gross 'plated weights'. It is an offence to drive a vehicle in a condition where any of these weights are exceeded.

## Kerb Weight

The Minimum Mass minus the driver's weight. When Kerb Weight used, driver weight is included within the Maximum Indicative Payload weight.

## Minimum Mass

Minimum Mass ('Mass in running order' on Certificate of Conformity and 'Mass in Service' on V5C form) is defined according to European Type Approval and include all fluids, tools and 90% fuel load/EV battery. It is minimum mass for this variant and does not consider local specification/trim or deletable options (specific to Ducato). Weights are also subject to manufacturing tolerances (EU Legislation allows 5% tolerance).

## Gross Vehicle Weight (GVW)

The total permissible weight of a vehicle including payload and passengers, as shown on the manufacturer's plate.

## Gross Combination Weight (GCW)

The maximum permissible weight of a vehicle, including payload and passengers, combined with the total weight of any trailer it is towing. The maximum GCW weight limit is quoted on the vehicle plate and must not be exceeded.

## Payload

The total permissible weight that can be carried without exceeding the vehicle's plated weight. Payload do not include driver but do take into consideration specification/trim level:

Weights are also subject to manufacturing tolerances (EU legislation allows 5% tolerance). Payload does not consider any additional options that a customer may order.

## Roof loads

Roof loads should be evenly distributed. Max roof load on L2 is 100kg, L3 150kg and L4 200kg

## Maximum towing weight

The maximum weight of any trailer and its load which may be towed within the limit of the vehicle's plated Gross Combination Weight (GCW). It is based on the ability of the vehicle – at full GCW – to restart on a 12% gradient, which is approximately 1 in 8.3, at sea level. At altitudes above 1500 metres, the engine output may drop with a corresponding reduction in towing capability. It is the operator's responsibility to ensure that the trailer noseweight does not cause the rear axle plated weight of the towing vehicle to be exceeded.

Always fit Fiat towing attachments and accessories available from your Fiat Commercial Vehicle Retailer. They are designed specifically for Fiat models and carry a 12-month warranty.

## Commercial Vehicle Categories

Differences between N1 and N2 (vehicles with GVW above 3500kg)

**Category N:** Goods vehicles

**Category N1:** Vehicles designed and constructed for the carriage of goods and having a maximum mass not exceeding 3.5 tonnes.

**Category N2:** Vehicles designed and constructed for the carriage of goods and having a maximum mass exceeding 3.5 tonnes but not exceeding 12 tonnes.

**Specific differences:** N2 vehicles are legally required to be speed limited at 56mph, and have a tachograph



VISIT US



TEST DRIVE



GET A QUOTE



CONFIGURE

## Fiat Professional FlexCare

### EXTENDED CARE PREMIUM

#### Extended Warranty + Roadside Assistance

Offers new van buyers complete peace of mind throughout the duration and mileage of your chosen contract term for worry free driving and maximum coverage, with the additional benefit of roadside assistance.

### SERVICE CARE

#### Scheduled Servicing

There's no need to worry about budgeting for your next service. Simply take out a Fiat Professional service care plan. You can then focus on the more important things in life, knowing your servicing costs are taken care of.

[DISCOVER MORE >](#)

## myFiatProfessional

Take care of your vehicle with a click! Register now for personalised advice, dedicated tools and exclusive promotions are waiting for you.

[MY.FIATPROFESSIONAL.COM >](#)

## BIK Calculator

If you have private use of a company van for more than driving to and from work, you may be taxed on this benefit.

[VAN TAX CALCULATOR >](#)

## Vehicle Excise Duty

V.E.D. rate for all light goods vehicles registered on or after 1 April 2026 and not exceeding 3,500kg: £375.



VISIT US



TEST DRIVE



GET A QUOTE



CONFIGURE

☰ E-DUCATO & DUCATO

**FIAT**  
PROFESSIONAL

To find out more visit:  
[fiatprofessional.com](https://fiatprofessional.com)



Updated 18 March 2026

Stellantis UK Limited trading as Fiat Professional, Pinley House, 2 Sunbeam Way, Coventry CV3 1ND.

NOTE: Every endeavour has been made to ensure that the information, including prices, contained in this leaflet was accurate at the time of publishing February 2026. The Company however, reserves the right, whilst preserving the essential characteristics of the models described, to introduce at any time modifications, changes of details, equipment or accessories as may be considered necessary to improve the models described or for any other reason of a constructional or operational nature.

Designed and produced by Varlo Press Ltd.



VISIT US



TEST DRIVE



GET A QUOTE



CONFIGURE